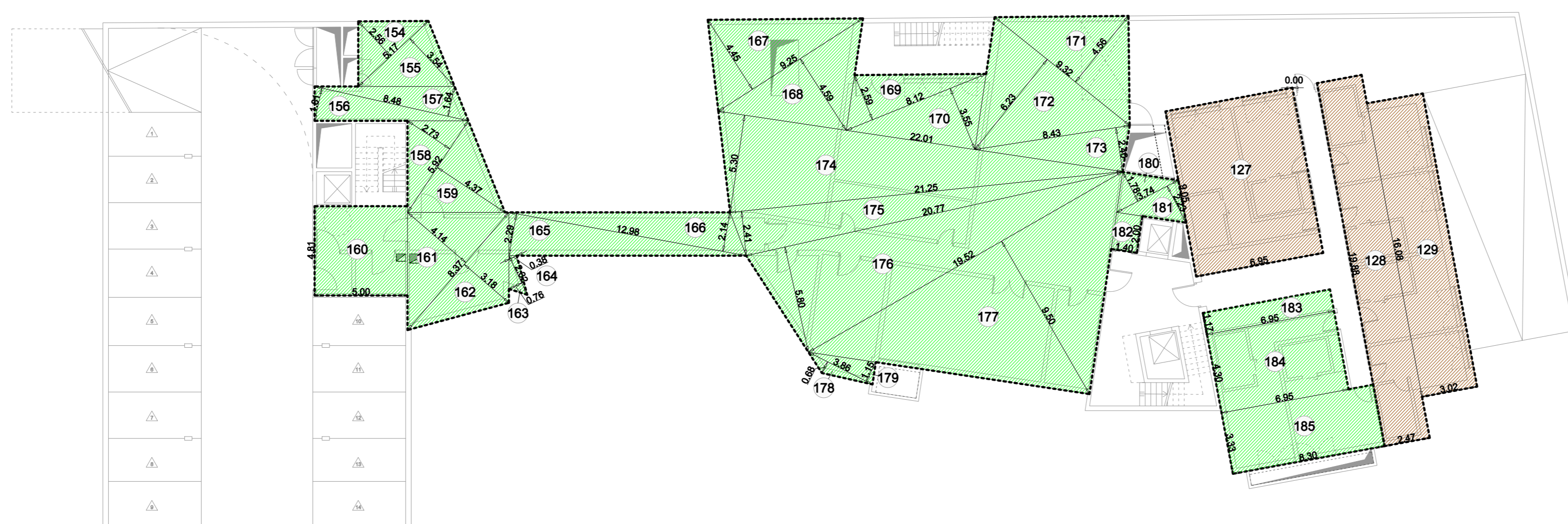


PIANTA PIANO INTERRATO

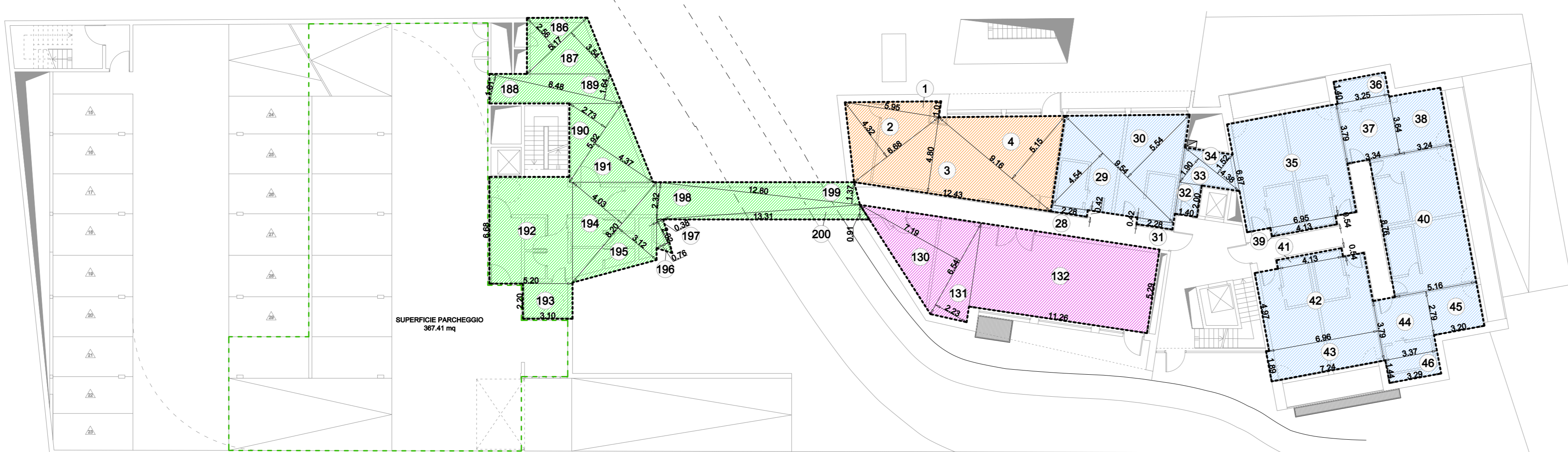


DETERMINAZIONE SUPERFICIE A PARCHEGGIO PRIVATO	
PREVISIONI DI P.G.T	PREVISIONI DI PROGETTO
1 POSTO MACCHINA OGNI CAMERA DALBERGO RICALCATA NEL CORPO IN AMPLIAMENTO (29 CAMERE = 29 POSTI AUTO)	29 POSTI AUTO
SUPERFICIE PARCHEGGIO A SERVIZIO EDIFICIO ESISTENTE: 2000,70 = 130,48 mq	
SUPERFICIE PARCHEGGIO A SERVIZIO SPAZI COMUNI + CAMERE PERSONALE + FITNESS: (421,88 + (60 * 2441,73) x 10 = 327,73 mq	
TOT. SUPERFICIE PARCHEGGIO: 458,22 mq	TOT. SUPERFICIE PARCHEGGIO: 659,75 mq

LEGENDA

--- SUPERFICIE DESTINATA A PARCHEGGIO PRIVATO: 367,41+292,34 = 659,75 mq

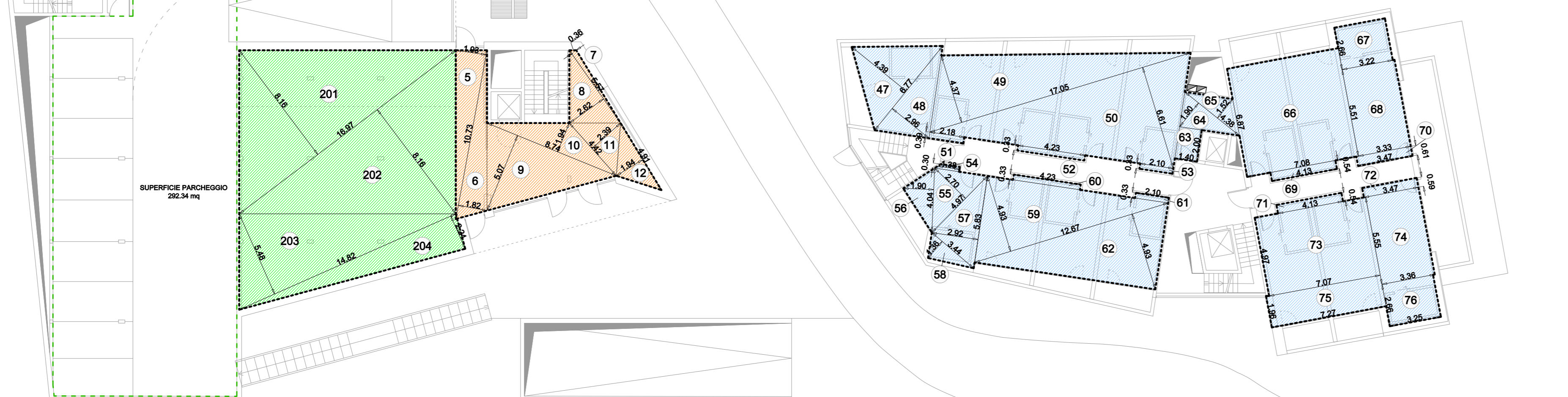
PIANTA PIANO TERRA



CALCOLO SUPERFICIE LORDA DESTINATA A CENTRO FITNESS IN PROGETTO			
n°	b (m)	h (m)	s. (mq)
PIANO TERRA			
130	6.54	7.192	23.51
131	6.54	2.232	7.29
132	11.28	5.28	69.57
TOT. piano 90.37			
PIANO TERZO			
133	3.84	1.412	2.78
134	3.84	1.412	2.78
135	4.08	2.03	9.46
136	20.34	10.112	103.43
137	20.34	8.642	87.87
138	6.29	4.112	12.83
139	6.29	3.932	11.42
140	10.82	5.962	32.24
141	10.82	0.842	2.92
TOT. piano 265.85			
PIANO SOTTOTETTO			
142	7.02	1.432	5.02
143	7.02	1.532	5.37
144	6.85	3.202	10.84
145	6.85	2.952	8.48
146	5.48	2.952	10.20
147	5.48	0.972	2.85
148	2.09	0.962	0.59
149	2.09	0.732	0.76
150	5.85	3.452	9.75
151	5.85	2.902	8.19
152	8.50	1.152	4.89
153	8.50	5.152	21.89
TOT. piano 85.55			
TOTALE MQ 441.73			

CALCOLO SUPERFICIE LORDA DESTINATA A CAMERE IN PROGETTO			
n°	b (m)	h (m)	s. (mq)
PIANO TERRA			
28	2.28	0.42	0.86
29	5.54	5.542	21.68
30	9.54	5.542	26.43
31	2.28	0.42	0.86
32	1.40	2.50	2.80
33	4.38	1.902	4.16
34	4.38	1.502	3.33
35	6.95	6.87	47.76
36	3.25	1.40	4.55
37	3.34	3.79	12.86
38	3.24	3.84	11.79
39	4.13	0.54	2.23
40	5.16	8.76	45.20
41	4.13	0.54	2.23
42	6.96	4.97	34.59
43	7.24	1.89	13.99
44	3.37	3.79	12.77
45	3.20	2.79	8.93
46	3.29	1.44	4.74
TOT. piano 291.42			
PIANO PRIMO			
47	6.77	4.382	14.80
48	6.77	2.962	10.02
49	17.55	4.372	37.25
50	17.55	6.612	66.38
51	2.19	0.39	0.65
52	4.23	0.33	1.40
53	2.10	0.30	0.69
54	1.38	0.30	0.41
55	4.97	2.702	6.71
56	4.54	1.862	3.84
57	5.83	2.922	8.51
58	3.44	1.382	2.34
59	12.87	4.902	31.23
60	4.23	0.33	1.40
61	2.10	0.33	0.69
62	12.87	4.902	31.23
63	1.40	2.00	2.80
64	4.38	1.902	4.16
65	4.38	1.502	3.33
66	7.08	6.87	48.64
67	3.22	2.86	8.57
68	3.33	5.51	18.36
69	4.13	0.54	2.23
70	3.47	0.61	2.12
71	4.13	0.54	2.23
72	3.47	0.59	2.05
73	7.07	4.97	35.14
74	3.38	5.55	18.85
75	7.27	1.96	14.25
76	3.25	2.86	8.65
TOT. piano 378.95			
PIANO SECONDO			
77	6.87	4.462	15.32
78	6.87	2.972	10.20
79	17.55	4.372	37.25
80	17.55	6.612	66.38
81	2.19	0.39	0.65
82	4.23	0.33	1.40
83	2.10	0.30	0.69
84	1.38	0.30	0.41
85	4.94	2.862	6.67
86	3.85	1.862	3.71
87	5.95	3.002	8.93
88	3.61	1.502	2.71
89	12.87	4.902	31.23
90	4.23	0.33	1.40
91	2.10	0.33	0.69
92	12.87	4.902	31.23
93	1.40	2.00	2.80
94	4.38	1.902	4.16
95	4.38	1.502	3.33
96	7.08	6.87	48.64
97	3.22	4.07	13.11
98	3.39	4.50	13.90
99	4.13	0.54	2.23
100	3.53	0.61	2.15
101	4.13	0.54	2.23
102	3.53	0.59	2.08
103	7.07	4.97	35.14
104	3.42	4.56	14.23
105	7.27	1.96	14.25
106	3.25	4.05	13.16
TOT. piano 380.35			
PIANO TERZO			
107	6.87	4.462	15.32
108	6.87	2.972	10.20
109	17.55	4.372	37.25
110	17.55	6.612	66.38
111	2.19	0.39	0.65
112	4.23	0.33	1.40
113	2.10	0.30	0.69
114	1.31	0.30	0.39
115	4.94	2.862	6.67
116	3.84	1.862	3.70
117	5.95	3.002	8.93
118	3.62	1.502	2.71
119	12.87	4.902	31.23
120	4.23	0.33	1.40
121	2.10	0.33	0.69
122	12.87	4.902	31.23
123	1.40	2.29	1.81
124	10.62	1.89	17.85
125	9.10	2.32	21.11
126	10.62	1.76	18.69
TOT. piano 288.47			
TOTALE MQ 1289.19			

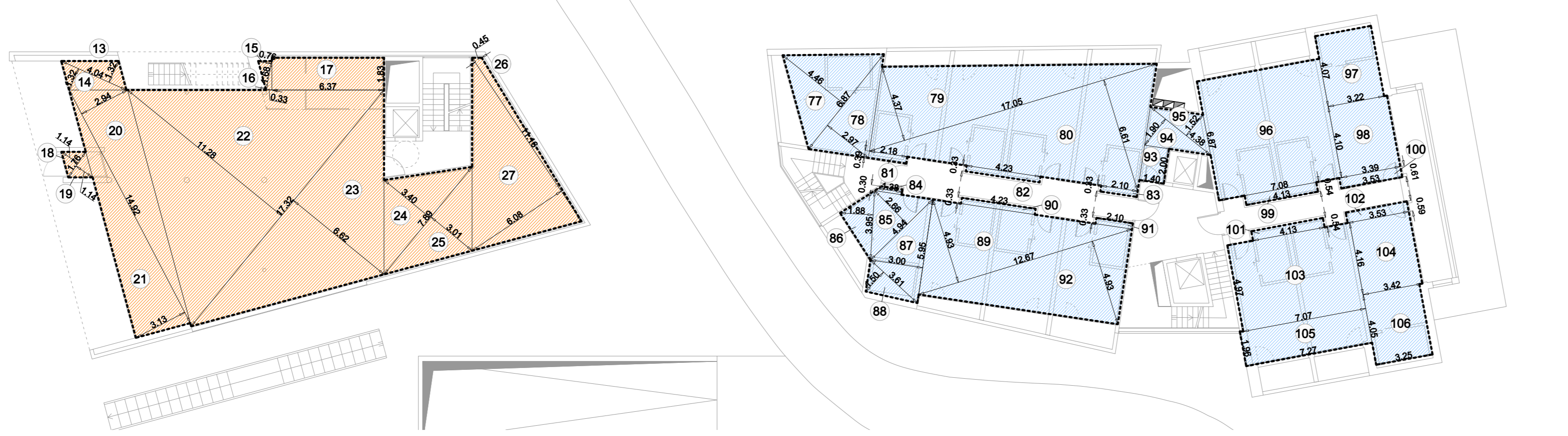
PIANTA PIANO PRIMO



CALCOLO SUPERFICIE LORDA DESTINATA A SERVIZI COMUNI IN PROGETTO			
n°	b (m)	h (m)	s. (mq)
PIANO TERRA			
1	5.95	1.012	3.00
2	6.98	4.332	14.43
3	12.43	4.802	29.83
4	9.16	5.152	23.59
TOT. piano 70.85			
PIANO PRIMO			
5	10.73	1.932	10.35
6	10.73	1.932	9.78
7	6.67	0.362	1.00
8	5.67	2.622	7.30
9	8.74	5.072	22.15
10	8.74	1.942	8.48
11	4.42	2.362	5.28
12	4.91	1.942	4.78
TOT. piano 69.08			
PIANO SECONDO			
13	4.04	1.322	2.67
14	4.04	1.322	2.67
15	1.68	0.762	0.64
16	1.68	0.332	0.28
17	6.37	1.83	11.66
18	1.76	1.142	1.00
19	1.76	1.142	1.00
20	14.82	2.942	21.90
21	14.82	3.132	23.25
22	17.32	11.282	97.88
23	17.32	6.622	57.33
24	7.89	3.622	13.41
25	7.89	3.012	11.87
26	11.18	0.452	2.51
27	11.18	1.322	13.93
TOT. piano 281.83			
TOTALE MQ 421.86			

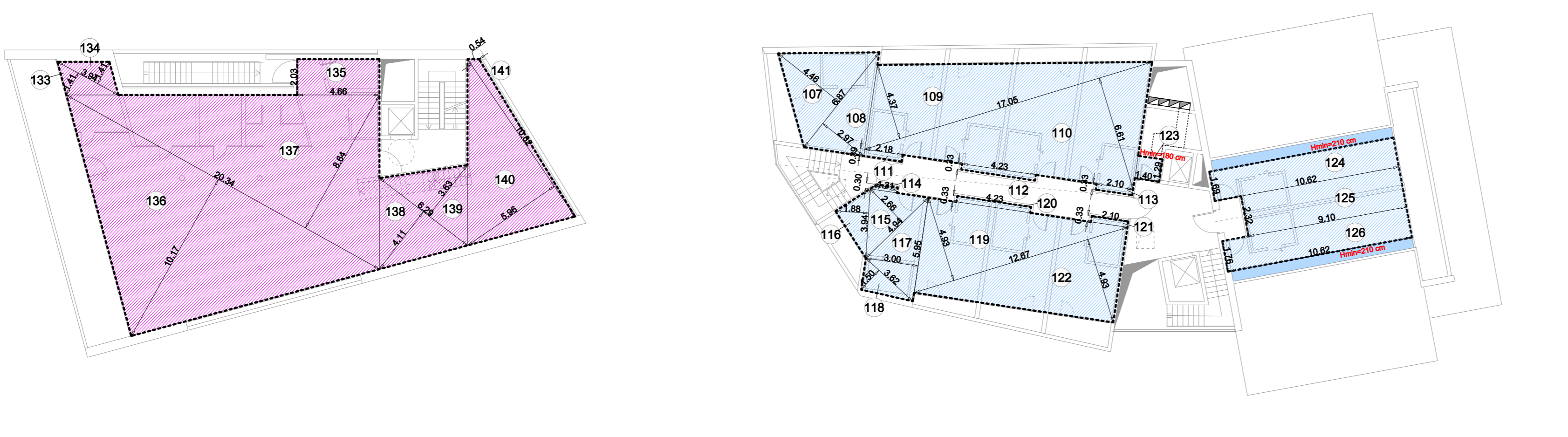
CALCOLO SUPERFICIE LORDA DESTINATA A CAMERE PER IL PERSONALE IN PROGETTO			
n°	b (m)	h (m)	s. (mq)
PIANO INTERRATO			
127	6.56	6.36	62.80
128	2.47	19.88	49.10
129	3.02	16.08	48.56
TOTALE MQ 160.46			

PIANTA PIANO SECONDO



CALCOLO SUPERFICIE LORDA ACCESSORIA IN PROGETTO			
n°	b (m)	h (m)	s. (mq)
PIANO INTERRATO			
154	5.17	2.582	6.82
155	5.17	3.542	9.15
156	8.48	1.812	7.87
157	8.48	1.842	6.95
158	5.92	2.732	8.08
159	5.92	4.372	12.94
160	5.00	4.81	24.05
161	8.97	4.142	17.33
162	8.37	3.182	13.31
163	2.32	0.762	0.88
164	2.32	0.362	0.44
165	12.98	2.282	14.88
166	12.98	2.142	13.89
167	9.25	4.462	20.98
168	9.25	4.592	21.23
169	8.12	2.862	14.52
170	8.12	3.852	14.41
171	9.32	4.592	21.25
172	9.32	1.332	28.03
173	8.43	2.402	10.12
174	22.01	3.302	58.33
175	21.35	2.412	25.61
176	20.77	5.802	60.23
177	19.82	5.802	92.72
178	3.88	0.862	1.31
179	3.88	1.152	2.22
180	3.74	1.782	3.33
181	3.74	2.332	4.17
182	1.40	2.00	2.80
183	6.95	1.17	8.13
184	6.95	4.30	29.89
185	8.30	3.33	27.64
TOT. piano 579.69			
PIANO TERRA			
186	5.17	2.582	6.82
187	5.17	3.542	9.15
188	8.48	1.812	7.87
189	8.48	1.842	6.95
190	5.92	2.732	8.08
191	5.92	4.372	12.94
192	5.20	6.88	34.74
193	3.10	2.20	6.82
194	8.20	4.002	16.52
195	8.20	3.122	12.79
196	2.32	0.762	0.88
197	2.32	0.362	0.44
198	12.90	2.322	14.85
199	12.80	1.332	8.77
200	13.31	0.812	6.06
TOT. piano 153.28			
PIANO PRIMO			
201	16.97	8.182	69.24
202	16.97	8.182	69.24
203	14.82	5.862	45.61
204	14.82	2.242	16.60
TOT. piano 190.69			
TOTALE MQ 629.86			

PIANTA PIANO TERZO



CALCOLO SUPERFICIE LORDA ACCESSORIA IN PROGETTO			
n°	b (m)	h (m)	s. (mq)
PIANO INTERRATO			
154	5.17	2.582	6.82
155	5.17	3.542	9.15
156	8.48	1.812	7.87
157	8.48	1.842	6.95
158	5.92	2.732	8.08
159	5.92	4.372	12.94
160	5.00	4.81	24.05
161	8.97	4.142	17.33
162	8.37	3.182	13.31
163	2.32	0.762	0.88
164	2.32	0.362	0.44
165	12.98	2.282	14.88
166	12.98	2.142	13.89
167	9.25	4.462	20.98
168	9.25	4.592	21.23
169	8.12	2.862	14.52
170	8.12	3.852	14.41
171	9.32	4.592	21.25
172	9.32	1.332	28.03
173	8.43	2.402	10.12
174	22.01	3.302	58.33
175	21.35	2.412	25.61
176	20.77	5.802	60.23
177	19.82	5.802	92.72
178	3.88	0.862	1.31
179	3.88	1.152	2.22
180	3.74	1.782	3.33
181	3.74	2.332	4.17
182	1.40	2.00	2.80
183	6.95	1.17	8.13
184	6.95	4.30	29.89
185	8.30	3.33	27.64
TOT. piano 579.69			
PIANO TERRA			
18			